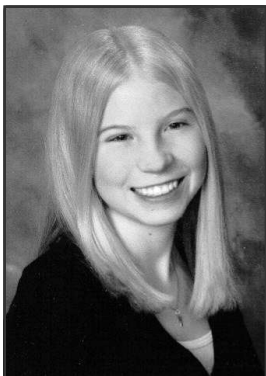


LIGHTS

JUNIOR LEAGUE OF
PITTSBURGH

Women building better communities

Inspiring tomorrow's leaders Scholarship Recipient Selected



*Erin Moran, Class of 2005
Baldwin High School*

The Community Assessment and Development Committee is pleased to announce the recipient of this year's JLP Scholarship, Erin Moran.

Erin is a senior at Baldwin High School and has been accepted to the Honors Program at John Carroll University. Not only is Erin an exceptional student, with a GPA of 4.6, she has shown

outstanding dedication to voluntarism throughout her high school years. Erin committed almost 200 hours to volunteer work at the Carnegie Science Center and 144 hours to serving as a counselor at Camp Soles. Additionally, she continues to narrate books for the Carnegie Library for the Blind and Physically Handicapped, help with the Special Olympics, and volunteer at her church. Erin plans to continue volunteering in the community after her

(Continued on page 4)

Bridging the Gap in Bloomfield

Walked through the Wear After Shop's basement lately?

It is, as always, packed with affordable fashions just waiting to hit the sales floor and find a new home. But if you look closely, you'll notice that we've got an awful lot of clothing from The Gap these days. Of course our members have been known to tote navy blue shopping bags down Walnut Street, but that can't possibly explain the explosion of jeans and tees and sweaters sporting that famous label.

The explanation?

The Gap in Western Pennsylvania holds an annual gathering for their store management teams. Meeting coordinator Tina Santos asked each manager to bring a bag's worth of gently worn clothing. Shop Co-Chair Sara Lowery filled a Jeep Cherokee to the ceiling with

(Continued on page 4)

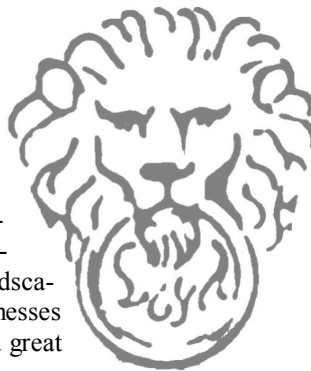
A Walk in the Park

Signature fundraiser continues the JLP Show House tradition

*By Kari Brumback,
2005 Designers' Show House chair*

It was a huge undertaking but the League successfully pulled it off. Despite precipitation and cold weather for the Opening Night Gala and the first few weeks of

tours, the 2005 Designers' Show House was a tremendous success. With the involvement of designers, landscapers, community businesses and volunteers—and a great deal of



(Continued on page 8)

Volume LXXXI, Issue 8

June 2005

INSIDE THIS ISSUE

President's Farewell	2
PE's Corner—Training	3
Annual Appeal	4
Nominating	4
Provisional Project	5
Show House Applause & Thanks	7

It's not Business. It's Personal!

Brought to you by the Strategic Development Committee.

Based on the most recent membership survey, we're going to "make it personal."

Find out what's going on with fellow members, families and friends. Better yet, share your latest news!

Check out the special members' only section of the JLP website and get connected to the news that says, "it's personal!"

President's Farewell Message



It has been an honor and a privilege to have served as the president of the Junior League of Pittsburgh, Inc. this past year.

I thank you for working with me.

I thank you for being smart, strong, kind, funny, caring, exasperating, enjoyable, infuriating, enthusiastic, clever and dedicated women.

You have truly made this a year I will never forget.

Thanks,
MAK

A Lights retrospective: Highlights from the President's Messages

August 2004:

"What can I do?"

CommunitY: I will remember that the reason we have a Book & Author event or a Show House is to make money to give back to our Community. I will consider being a reader with EW! I will think about a 2nd Placement with Providence Teen or Safety Kids. I will do more than my required one Done In A Day project. I will give back to the community which has given me so much.

September 2004:

I disapprove of what you say, but I will defend to the death your right to say it.
—Voltaire

The aim of an argument ... should not be victory, but progress. —Joseph Joubert (1754-1824)

A pessimist is one who makes difficulties of his opportunities, and an optimist is one who makes opportunities of his difficulties." —Harry S. Truman

As the JLP President, I may not agree with what you say, but I will defend your right to say it, I will listen to it and I will act for the Junior League of Pittsburgh and its members so that we can continue to improve and grow as an organization.

October 2004:

For the Garden of Your Daily Living:

PLANT FOUR ROWS OF SQUASH:

1. Squash gossip
2. Squash indifference
3. Squash grumbling
4. Squash selfishness

Please think about the Junior League as your own garden.

February 2005:

A VOLUNTEER is a person whose charity is fidelity, who is faithful in an unfaithful world, grateful in an ungrateful world, giving when all about are grasping, listening when others need to tell about their fears and problems.

Excerpt from: "The Beacon," a newsletter of Birthrite, South Africa.

*By Mary Adele Krolikowski
President, 2004-05*

Board of Directors

President

Mary Adele Krolikowski

President-Elect

Lynne Chadwick

Recording Secretary

Susan Book Campbell

Treasurer

Carol Anderson

Treasurer-Elect

Jane Terlion

CADC Director

Rebecca Jacobs

Communications/PR

Ann Bondi

Education/Events Director

Elizabeth Winch

Fund Development Director

Julia Sheridan Gleason

Membership Development Director

Lorraine Marks

Nomination Director

Christine Emanuelson

Placement Director

Beth Regan

Projects Director

Kelly Enders

Strategic Development Director

Kelly Morgans Schraven

Sustainer Director

Millie Ryan

The Junior League of Pittsburgh is an organization of women committed to promoting voluntarism, developing the potential of women and to improving the community through the effective action and leadership of trained volunteers. Its purposes are exclusively educational and charitable. The Junior League of Pittsburgh reaches out to women of all races, creeds, religions or national origins who demonstrate an interest in and commitment to volunteerism.

Website: www.jlpgh.org

Email: info@jlpgh.org

Phone: (412) 422-8580

Fax: (412) 422-8706

PE's Corner



A Word (or Two) About Training

By Lynne Chadwick
President-Elect, 2004-05

Having just returned from the Association of Junior Leagues International (AJLI) Annual Conference, I am reminded of the importance of training to our organization, both locally and internationally. It's also

budget time, and some of you may have wondered exactly why we spend so much money on training—over \$11,000 for AJLI training events, including Fall Leadership, Networking and Governance, 2006 Annual Conference, Organizational Development Institute (ODI), and Great Lakes Regional Meeting.

First, the mission statement (ours and those of the 293 other Leagues) specifically uses the term "trained volunteers" when describing how our goals are to be accomplished and lists "developing the potential of women" as one of three things to which we are committed. In fact, we often refer to ourselves as a training organization. This was very much Mary Harriman's idea—to train women to serve their communities—when she founded the Junior League in 1901. Training is truly in the fiber of our organization.

Another key point is that although it seems like AJLI training only benefits a few members selected by the Nominating Committee, it is instrumental in gathering ideas and continually improving what we do. Many of the ideas that the JLP has adopted have come from AJLI training, including, but not limited to, Gold Active status as a way to retain active members, announcing the slate throughout the year so that leadership transitions can happen earlier and more effectively, and holding regional "town hall" meetings instead of a general membership meeting once a year. If you have attended an ODI or regional meeting,

I'm sure you came back with many great ideas, some of which were even implemented.

In addition to ideas for improving the JLP, AJLI training provides presidents and presidents-elect with important information about running a small business—which the League is—including finance and budgeting, personnel issues, insurance coverage, and general legal compliance. The training we receive helps protect us from taking actions that could result in lawsuits or other unnecessary risks. It's hard to put a price on the importance of protecting our finances and reputation.

We often refer to ourselves as a training organization. This was very much Mary Harriman's idea—to train women to serve their communities—when she founded the Junior League in 1901. Training is truly in the fiber of our organization.

As for regional meetings and ODIs, it has been my experience that the majority of members who attend come back with an enthusiasm that would be hard to generate elsewhere. They are inspired

by what other Leagues are doing and remember the joy of serving the community through an organization that is both local and international at the same time. I firmly believe that members who attend regional meetings and ODIs are much more likely to stay members and continue to be leaders. Also, having spent my fifteen-year career in the field of training and development, I can assure you that AJLI provides training that is incredibly engaging, consistently focused on what we as volunteers need to do to fulfill our mission, and some of the best training that I've experienced anywhere.

Finally, as a member of the Association of Junior Leagues International, it is important that the JLP participate in the governance of the organization. We send a member to represent us in voting at Annual Conference and one to prepare for voting in the following year. All but fewer than thirty Leagues sent a voting delegate to this year's Annual Conference, and the ones that didn't truly couldn't afford to do so. We are very fortunate to have the financial stability that allows us to fully participate in the governance of our international organization.

Here's to a Great Year, Coming and Going

It's that time of year in the Junior League when we use the word "transition" a lot. It's a time to reflect on our successes, learn from our mistakes, and most importantly to thank those who have made our year special. I especially want to thank two very special ladies, one going and one coming. To Mary Adele, thank you for leading the way for me both as president-elect and as president. So many things were and will be so much easier because you did them first. To Linda Hartman, whose commitment to the JLP is so strong that she came back to active membership status to serve as president-elect, a heartfelt thank you. The JLP women who have made my PE year great are too numerous to mention, but if you've ever sat through a meeting with me, greeted me with a smile, took on a task that I was too busy to do, gave me a useful suggestion, or made me laugh, I thank you.

By Lynne Chadwick
President-Elect, 2004-05

Shop Talk: Bridging the Gap



(Continued from page 1)
 their donations—fifty Hefty bags full!

Tina originally hoped to donate the goods to the Women’s Center and Shelter of Greater Pittsburgh, but WC&S steered her to the Wear After Shop. The Shop serves not only as a fundraiser, but as an important social service, too. On any given day, some of our customers may be paying with a voucher from the Shelter. There is no cost to the Shelter and

no cost to the women—it is simply a way to quickly replace clothing that they and their children may have left behind.

The Gap donation filled a critical need at the Shop.

Jeans and other casual apparel—the modern American uniform—are most in demand by our customers and by women from the Shelter, too. But member donations for quota are often dressier fashions—suits and heels and evening wear. The April donation is just what we needed to meet our all of our shoppers’ needs.

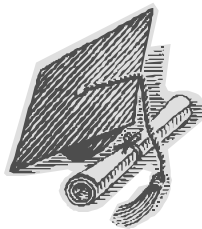
Many thanks to The Gap for being thoughtful and generous.

By Abby Sandel, Shop co-chair

Tomorrow’s Leaders JLP Scholarship Recipient

(Continued from page 1)
 graduation from high school and hopes someday to start a program to help poor and underprivileged citizens.

In awarding this \$2,500 scholarship to Erin, the CADC committee wishes her continued academic success and commends her for her efforts as a volunteer.



By Michelle Smith, CADC Director

NOMINATING Finalizing the Slate

*By Chris Emanuelson,
 Nominating Director*

The Nominating Committee has been busy throughout the year, but with summer finally approaching, committee members are busy finalizing a slate for the 2005-2006 League year.

Most board and committee chair positions have been filled at this point, but the committee is still seeking a woman interested in chairing the Book and Author Series Fall 2005 event. Someone—perhaps a member who requested a placement on the

Fund Development Committee—is needed to take on the responsibilities of planning this spectacular fundraiser. Several members have expressed interest in serving on this fundraising committee and assisting on the day of the event, but the committee needs an event chair.

As the slate nears a final draft, you can find the most up-to-date version on the JLP website, www.jlpg.org. Log in to the site as a member and reference “2005-2006 Placement” on the Member Area page to view the current slate. Any questions regarding slated positions can be directed to me at c.emanuelson@comcast.net.

JLP 2004-2005 ANNUAL APPEAL

Thank you to JLP actives, sustainers and community members for your generosity this year!

The Annual Appeal campaign raised over \$4,800 this year. All proceeds are designated to be used exclusively for our community projects. We value your friendship and appreciate your ongoing support of the Junior League of Pittsburgh.

With greatest appreciation, we recognize the following donors:

- Anonymous
- Danielle Boston
- Susan Book Campbell
- Lisa Campoli
- Lynne Chadwick
- J. Alan Crittenden
- Angela Cymbalak
- Kristi Davidson
- Paula Dillig
- Christine Emanuelson
- Kelly Enders

- Gail Groninger
- Stacey Jacobs
- Augusta Kairys
- R. Drew Kistler
- Mary Adele Krolikowski
- Loretta Lobes
- Jean Novak
- Marcella Reed
- Michelle Reyes
- Pamela Gardner Rende
- Jane Terloin
- Beth Vucic
- Janet Wagner
- Sara Woodward

“Saturday Afternoon Fever” Overtakes Dancing Seniors New Provisional Class Project Entertains at Vintage

The second provisional class project for the 2004-2005 League year involved working with Vintage Senior Community Center to plan and host a “Senior Prom.” Planning started last fall when committee members Kimberly Baker, Erica Burns, Kristen Fawcett, Maria Lauro, Leah Lovette, Andrea Malone, Adrienne Monaghan, Emily Pennypacker, Melissa Polachek, Robyn Race-Loughren, Karen Rollins-Fitch, Jennifer Tylka, and Christa Valentine first met with Vintage staff and membership development committee project advisors to learn more about Vintage, its members, and what kind of event would work best.

The senior prom, which officially became known as “Saturday Afternoon Fever,” was truly a team effort. Three subcommittees, facilities, donations, and entertainment, began a planning process that was both challenging and interesting. Planning required the committee not only to learn how to access resources from within the League but also to draw upon resources in the Pittsburgh community and members’ own personal contacts. Committee members also were exposed to many different League functions, such as fundraising, public relations and strategic planning.

The entertainment subcommittee approached Saturday Afternoon Fever with determination and enthusiasm, working to secure a DJ, plan how prizes would be given away, and set a tone for the event. In addition to planning entertainment, each subcommittee member offered to assist with other subcommittees’ efforts as needed.

The donations subcommittee’s responsibility was to secure all the necessary items or monetary donations to fulfill the entertainment and facilities subcommittees’ wish lists. Donations was the smallest group, yet had a daunting responsibility and through persistence, networking, and creative thinking was able to exceed all expectations. Saturday Afternoon Fever was a success in part because of the abundance of food, prizes, decorations, corsages, commemorative pictures, and other goodies that were donated.

Saturday Afternoon Fever took place on April 9. Seniors were greeted by committee members, who welcomed them with corsages tied with Junior League ribbon. Attendees were then directed to a balloon and flower-decorated arch, where a commemorative photograph was taken. They then entered Vintage’s “ballroom,” where DJ Dr. Red and Stella, a line dance instructor, held court. Snacks, punch and Starbucks coffee were available to all. Then lunch, generously donated by Schenley Gardens, was served. Cookies and a beautiful cake decorated with dancers were served for dessert. Dancing continued until a break was taken to disperse door prizes. The dancing



The Vintage line dancers show Kristen Fawcett (left) and Stephanie Hoogendoorn a few moves. The Vintage line dance instructor, Stella, directs from the auditorium stage while DJ Dr. Red plays the cool tunes. The Vintage dancers were amazing as they all knew the steps to at least a dozen dances and out-danced the JLP.

then resumed and continued well after the senior prom was scheduled to end. As they departed, seniors received goody bags filled with Eat ’n Park cookies, pens, and other items, including a commemorative photograph in a Saturday Afternoon Fever frame.

Seniors who attended Saturday Afternoon Fever commented, “A lot of activities and the food was good” and “I’m enjoying it immensely; it’s truly a great time!” The event’s line dance instructor remarked, “I’m really proud of the group. They’re great and they love to dance!”

Throughout the planning process, the facilities subcommittee lost almost half of its members. The donations committee also dwindled as planning truly got underway. However, many provisional and active members, JLP board members, and friends jumped in to help on the day of the event with the setup, operation and clean up, ensuring that the day went seamlessly. In the end, seeing what a wonderful time all the seniors had that day left us with a great feeling of accomplishment.

In all, the provisional class members who participated in the senior prom project enjoyed the learning process that Saturday Afternoon Fever afforded and hope that future provisional class members are granted the same opportunity to engage in event planning.

We loved it, and we’d definitely do it again!

Membership Development Committee Year End Review

By Lorraine Marks,
Membership Development
Director

As a wrap up goes, this one is tough. Membership development has become a part of me. The committee has included an incredible group of women for the past two years and the provisionals have been amazing. Three current first-year actives will serve on the JLP Board already and five current first-year actives will serve as committee chairs. Leadership positions in their second year in the League—I'm so proud. I will be excited to see the progress that the members of this year's Provisional Class make in their League careers. Some are already stepping into main committee positions.

When you see a sea of faces in the beginning of the year and by the end of the year, you see a sea of friends, it's a great feeling. It's addictive! There was fun throughout the year—the red book trainings, a bus tour, lunch at Claddagh, ice-skating, Wear After Shop training, a

“Furbulous” event at the shop, and much, much more.

One of the high points of this year for me has been to witness the changes to the provisional projects. Without Kelly Nottingham and Stephanie Hoogendoorn's phenomenal hard work and patience, membership development would have continued to “color

inside the box.” (Thanks for that training, Liz.) At the end of the last League year, when membership development committee members noted a gap in provisional training, they stepped up to the plate and made change happen. Even they did not realize what they were signing on for and they still made it work.

I hope that these new projects, Secret Santa and Saturday Afternoon Fever, will become a mainstay of membership development training. In my opinion, Kelly and Stephanie should go down in the JLP history books. Stephanie also managed to hold down the very taxing Show House assistant treasurer position at the same time. I don't know how she did it.

Another high point of the year for me has been to see succession planning work. It's such a dream come true to have committee members want to take on leadership roles for the year ahead. It is perfect for me to be able to hand the committee over to capable women like Jen Daurora, Christie Smith and Traci Nelson. I can comfortably move into a new role as Secretary for the 2005 – 2006 League year when I know that new members will be taken seriously, trained well, and encouraged to become an active, working part of the League because they will be enjoying their provisional year under the guidance of the women on the Membership Development Committee. To serve on the committee is a privilege that I'm honored to have enjoyed for the past two years. A huge thank you to all of those with whom I have worked!

It has been really wonderful.

Hello everyone!

I can't begin to thank you enough for the amazing event you pulled off on Saturday! You certainly raised the bar for future Vintage events. You would never know that this was a group of provisional Junior League members. You were all real pros. And it was a true delight working with each and every one of you.

I would like to share a story which serves as both a compliment to your fine work and an apology from me. On Saturday evening I was thinking back over the wonderful day when it occurred to me that I never formally thanked The Junior League on stage in front of our seniors. I'm so sorry. In all the years I've planned events, I think this is the very first time I actually relaxed because the committee was so much in control and doing such a great job. I set very high standards, so when I say your committee was doing an outstanding job, I mean it.

I would normally give thanks at the beginning or end of a program. At the beginning, I was still taking tickets and at the end I was creating a marketing flyer to give our seniors as they departed. This is a long-winded way of saying I'm sorry and also complimenting you on such a great job that I finally relaxed about an event (my staff will tell you that is a major accomplishment!).

You are all such wonderful people. You gave up a beautiful Saturday afternoon, along with much time given to meetings and personal assignments, to give our seniors a very special gift. I hope you saw the joy on the faces of the seniors at the dance. So many of our seniors go home to neighborhoods where drug deals and violence on the streets outside their homes are commonplace. It touches my heart to see them so happy and treated so royally at a very special event.

This is much, much longer than my traditional thank you notes. But it is very, very deserving. The Junior League holds a very special place in my heart and I know in the hearts of Vintage and our seniors. Thank you! Thank you! Thank you!

Many blessings to each of you.

Tom Sturgill,
Program Director
Vintage

As Membership Director, Lorraine Marks received the above letter of thanks from Tom Sturgill, Program Director of Vintage Senior Community Center in East Liberty. The Junior League of Pittsburgh helped to establish Vintage in 1973.

A Walk in the Park

2005 Designers' Show House Scrapbook



Designers' Show House
820 North Highland Avenue



Highlight
from the Gala Opening Night
(L to R) Mary Adele Krolikowski and Jennifer Antkowiak present
a print of the Show House to Scott and Diane Dietrich, the
Highland Park homeowners.



Photo courtesy of: Black Tie.
Designers' Show House Gala Committee
Liz Winch, Sarah Datt, Beth Vucic, Lori Kuhn, Andrea
Malone, Jill Shurie, Michelle Koehler, Naomi Canella.



Ready to greet Show
House patrons and
sell tour tickets:
volunteer staffers,
Crystal McCormick Ware and Christie Smith



Brunch and Fashion Show: the fashion show models pose for a photo.

Show House
Special Event,
Mother's Day



Enjoying
the kick-off party: volunteer members
Jamie Siegel and
Kelly Schraven

2005 Designers' Show House Thanks and Applause

(continued from page 1)

Mannual labor from the League—the magnificent Highland Park home opened right on schedule.

Show House is a tremendous way to raise money for the JLP and a perfect showcase for the talents of local design professionals. Without the designers' contributions, the League would not have a Show House. As chair, I would like to recognize the participating designers for their dedication and hard work in creating this year's Show House. The designers were led by Design Manager Kim Kisner and Katie Heinritz. Kim and Katie did a fantastic job from start to finish. It all began at Room Selection Day last November and resulted in a gorgeous house after many long days and a lot of phone calls. Thank you, Kim and Katie.

Show House Marketing efforts were out of this world! Communications Director Ann Bondi and PR/Marketing Chair Robin McDonnell formed partnerships with Pittsburgh magazine and WQED Multi-Media that allowed the League to launch Show House publicity in Pittsburgh magazine's April issue, followed by public service announcements. Show House also saw a very successful media day. Thank you to Ann, Robin, Sara Jefferies, Mandy Ranalli, Christie Smith, Kim Kisner and Mary Adele Krolikowski for their efforts. KDKA "Pittsburgh Today Live" host Jennifer Antkowiak devoted an entire episode to a behind the scenes look at Show House, the League, and interviews with participating designers.

Show House and its gardens were featured in both local newspapers, with feature articles in the April 23 editions and the Opening Night Gala featured in both papers' social columns. Feature articles appeared in the Home Design Resource Remodeling Guide, the Washington Herald, and Shady Avenue magazine, as well. Show House also had six fabulous billboards by partnering with Lamar Advertising. I have not captured all of the media coverage that Show House received, but the marketing team was fabulous and created public awareness for the League, too. The entire Communications and PR/Marketing Committee deserves a huge round of applause—Chère Tiller (graphic designer – print & advertisements), Jamie Siegel (website) Betsy Minneo and Kristi Davidson (program coordinators), Angie Cymbalak (sign coordinator), and Allison Spory, Christa Valentine, Jamie Alejandro, Sara Jefferies, Denise Gove, and Mandy Ranalli.

Special events were fantastic, too. A special thank you to Karen Rivetti, Mollie Rea, and Kathryn Goodman for putting together a fabulous **Sneak-A-Peek** weekend. Karen and her committee were handed the task of putting together an April

1st kick-off party and planning a "Sneak-A-Peek" weekend that allowed the general public to view the home prior to its transformation—a first for the League! Congratulations on a job well done.

The **Opening Night Gala** was an elegant affair at which over 375 guests had a grand time. Thank you to Gala Co-Chairs Liz Winch and Michelle Koehler, and Beth Vucic, Sarah Datt, Naomi Canella, Lori Kuhn, Alyssa Heidinger, Andrea Malone, and Jill Shurie. The **Sustainer Luncheon** on April 25th launched the following week with roses and a huge crowd. Millie Ryan brought more than 225 sustainers and friends to Show House for a fascinating lecture by the Home Design Resource Remodeling Guide magazine and a Truffles & Flourishes-catered luncheon. Congratulations to Millie, Linda Ban, Jan Chadwick, Susanne Wilkinson, Gusty Kairys, and Peggy Mooney.

Another new addition to the Show House calendar was an **Evening with the Designers** on April 29, 2005. Marcia Kelson chaired this successful Girasole-catered wine reception at which more than 100 guests enjoyed jazz and met the designers. Thank you to Marcia, Tina Pretsch and Susan Wagner.

The **Mother's Day Brunch and Fashion Show** was a gorgeous day with fantastic food. More than 140 guests had a memorable Mother's Day thanks to Chair Lisa Campoli, Gareth Smith, Kelly Nottingham and Mary Adele Krolikowski. Special thanks to Abby and Art Sandel, Jill Shurie, Michael Hannon, Naomi Canella, Jack and Sarah Krolikowski, and Sarah's friend Colleen for coming out early Sunday morning to prepare for and staff the event.

Suzy Golitko chaired the **Tickets Committee** and cannot be thanked enough for pitching in when the League needed her most. Tickets are the main source of Show House revenue! Thank you to Suzy and her committee. **Group tours** were another great addition to Show House that Suzy championed as well. More than 150 people toured the house on docent-led tours. Thank you to docents Suzy, Mary Adele Krolikowski, Kim Kisner and Christie Smith.

Thanks also to Coldwell Banker and Howard Hanna for hosting **corporate events** at Show House for more than 265 agents and clients. A special thank you to Erin Queen for coordinating the Coldwell Banker event and to Julia Gleason for coordinating two Howard Hanna nights.

Operations—a huge undertaking and a job well done by Lorraine Marks's committee, which handled security, parking, permits, dumpsters, cleaning crews, window washing, locks, moving, storage, and more. Thank you to Lorraine, Jennifer Daurora, Nancy Davis, Elena Heidinger, Felice Krupp, Maria

2005 Designers' Show House Thanks and Applause

Lauro, Beth McCall, Emily Pennypacker, Christie Smith, and Elizabeth Vitchock.

The Rentals Committee was a new addition to this year's Show House and did a great job coordinating rentals for Show House events. Thank you to Rental Coordinator Catherine Baker and Sally Ritts-Smith for all of their efforts and attention to detail.

The Staffing Committee did a fantastic job and opened the house for every scheduled shift. There were only two days when the boutique could not open its door. Committee chair Loretta Lobes lost some sleep but always had a smile. Thank you to Loretta, Adrienne English (who coordinated the April work schedule and housesitting), Jan Chadwick (sustainer staffing chair), Linnea Johnson, Beth Reilly, and Liz Vitchock. And thank you to the League members who completed Show House staffing/shift requirements. It is because of you that the League is able to open Show House and raise money for charitable projects. A special thanks to gold active and sustaining members who staffed the house!

The Show House boutique was filled with wonderful local artisans' work, as well as JLP merchandise. This year's boutique exceeded its revenue projections! Led by Co-Chairs Caroline Roche and Maribeth Thomas, the Show House Boutique Committee transformed a garage into a garden boutique. Thank you so much for all of your efforts, Caroline, Maribeth, Kathy Ciorra, Julie Haas and Diane Rankin.

Fund Development brought more than \$10,000 dollars of direct sponsorship to Show House. Applause to Fund Development Director Julia Gleason and Sponsor/In-Kind Chair Emily Busse. And thank you to our many sponsors, who are listed in this edition of "Lights."

Last, but not certainly not least, are the Designers' Show House assistant treasurers who kept the Show House fundraiser running. With support from Assistant Treasurer Pamela Rende and League Treasurer Jane Terlion, what a job Stephanie Hoogen-

doorn did, practically living in the Show House basement.

The 2005 Designers' Show House has been a wonderful experience for me and I thank the League for giving me the opportunity to chair such an amazing event. I want to extend special thanks to Cookie Roberson and Christie Smith for being such an



Show House Boutique:
Molly Ruscitti, Claire Lobes and Liza Goldberg ready to assist patrons with amazingly unique array of merchandise.

amazing support system for me and for always being there when I needed them most. Enjoy your summer—I know I will as I begin work on my own house and relax at the pool with my family. Thank you to my family for putting up with me, a messy house, and a crazy schedule! Dave, Hannah and John are definitely ready for summer.

Thank you to everyone involved in such a successful fundraiser.

Figure 8 Island Wilmington, NC
Cottage Rentals - Private Island
North Carolina's BEST KEPT SECRET

Horning Cottage: 4BR/2B /Soundfront/\$2,600 wk.
 Bachman Cottage: 4BR (2master)/3B/3,200 sq. ft of living space, across from ocean/\$3,100 wk.

Blanken Cottage: 5BR (3master) /4.5B/deepwater dock for 2 boats, large cottage /\$4,000 wk.
 All cottages include: LuxTax, Linens, Numerous Amenities. Spring & Fall are Summer Temperatures. No Crowds. For photos and information, go to:
www.figure8rentals.com
 Or call: Bunnie Bachman @ 910-686-1144

A Walk in the Park

2005 Designers' Show House Executive Board

Show House Chair – Kari Brumback
 Show House Sustainer Advisor – Cookie Roberson
 Administrator – Christie Smith
 Assistant Treasurer – Stephanie Hoogendoorn
 Assistant Treasurer – Pamela Rende
 Design Manger – Kim Kisner
 Operations Manager – Lorraine Marks
 Communications Director – Ann Bondi
 PR/Marketing Chair – Robin McDonnell
 Fund Development Director – Julia Gleason

2005 Designers' Show House Committee Chairs

Design Events Chair – Katie Heinritz
 Landscape Chair – Melissa Stewart
 Permit/Risk Coordinator – Beth McCall
 Sneak-a-Peek Chair – Karen Rivetti
 Sustainer Event Chair – Millie Ryan
 Gala Co-Chair – Elizabeth Winch
 Gala Co-Chair – Michelle Koehler
 Mother's Day Event – Lisa Campoli
 Designer Wine & Cheese Event – Marcia Kelson
 Ticket & Group Tour Chair – Sustainer Advisor Suzy Golitko
 Program Chair – Betsy Minno
 Print Coordinator – Kristi Davidson
 Website Chair – Jamie Siegel
 Graphic Designer – Chère Tiller
 Historian – Kelly Schraven
 Sponsor/In-kind/Auction Chair – Emily Busse
 Boutique Co-Chair – Caroline Roche
 Boutique Co-Chair – Maribeth Thomas
 Rental Coordinator – Catherine Baker



DESIGNERS' SHOW HOUSE The 2005 Designers

Smoking Room:

Richard Barranti & Larry Walker, Richard Lawrence Interiors

First Floor Entryway/ Staircase/ Second Floor Entryway:

Neill Stouffer, Today's Home

Kitchen and Pantry:

Suzanne Bernard, Manderly, Inc.

Living Room:

Sue Anderson & Melissa Nonnenberg, Meadeworth Interiors

Sun Porch: Melissa Ferrari, Le Tapisseur

Dining Room:

Ray Dortenzo, Raymond J. Dortenzo & Associates

Wine Room: Faux Finisher Martha Z. Zatezalo, Z Studio of Decorative Finishes

Powder Room: Nancy Drew, Drew Designs Limited, Ltd.

Ladies' Study/Office: Susan Stabnau and others from Ethan Allen, Inc.

Sitting Room/Study: Rachel Farley, Bennett Farley Interiors

Master Sitting Room: Mindy Mackins Morton, Mackins Morton & Associates

Master Bathroom: Showcase Kitchen and Bath

Master Bedroom: Angela Nolfi, Angela Nolfi & Co.

Bathroom: Marguerite White

Bedroom: Evelyn Wedner and James Checkeye, Evelyn James Interiors, Inc.

Laundry/Craft Room: Ronda Carman and Jennifer Brandenstein, ReDesigned Rooms

Patios in Back Yard: Germaine Gladu, Heritage Landscape Supply

General Landscaper: Greg Friday, Friday Perennials

Photo courtesy of:
Black Tie.

Designers gather
for "An Evening with
the Designers"



2005 Designers' Show House

A Walk in the Park

*A very special thank you
to all of our sponsors for helping to
make our show house a success!*

Junior League of Pittsburgh, Inc.



Tisdell

Silver Sponsors

- Home Design and Remodeling
- Resource Guide
- UPMC Health Plan
- KDKA
- American Standard
- Howard Hanna
- Lamar
- Truffles and Flourishes Catering

Bronze Sponsors

- PPG
- Highmark
- Cardello Electric Supply Company

Copper Sponsors

- Eckert Seamans Cherin & Mellot, LLC
- KPMG
- Pittsburgh Telephone
- Fluted Mushroom

- Girasole
- Opening Night Catering
- Melting Pot
- 92.9 FM
- ABM Janitorial Services
- South Hills Movers
- PFE Fire and Safety Corp
- Betsy Ann Chocolates

Friend of the League

- Castriota Metals - Pittsburgh Roll Off Services
- Fish Window Cleaning
- Acelock
- American Speedy
- Baum Vivant
- Prantl's
- Pittsburgh Brewing Company
- PGT Trucking
- Botanical Designs by Leon
- Cabot Cheese
- Palm Place
- Remnant City
- Jonas Photography
- Frank B. Fuhrer Wholesaler
- Ford Business Machines

Corporate Night Sponsors

- Coldwell Banker



About Lights

**Lights is a publication of the Junior League of Pittsburgh, Inc.
and is produced 8 times per membership year.**

Chair and Editor:
Chère Tiller chere.tiller@forus.com

Submission REQUIREMENTS:

- Submit all articles, in electronic format, to Chère Tiller at: chere.tiller@forus.com
- Articles should be submitted as a plain Word document
- Please avoid adding Tabs, Tables and Font Formatting
- Submission of digital photos and graphics should be sent in JPG or EPS format (zipped /compressed before sending)
- The editorial staff reserves the right to edit for content, length and style
- For advertising rates, contact Chère Tiller.

Submission DEADLINE / Issue:

2005

August 12 / September
September 9 / October
October 14 / November

2006

January 13 / February
February 17 / March
March 17 / April
May 12 / June
July 21 / August